



Welcome
to the
Farmington Early Childhood Center!

February 9, 2021

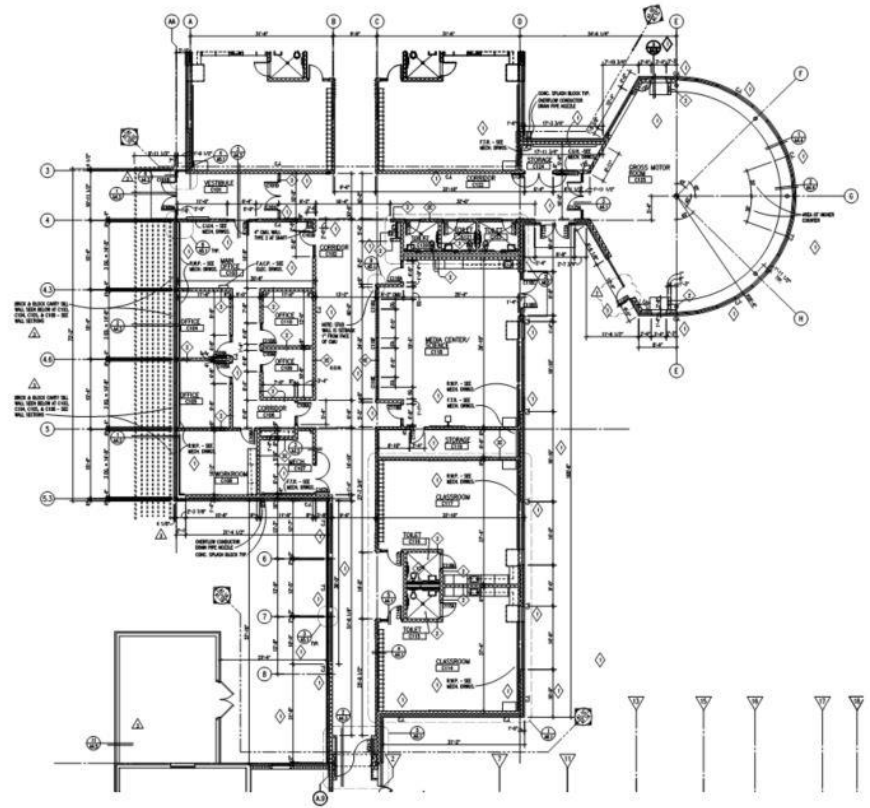


Origins & Planning

- Farmington Public Schools has long recognized the value of early childhood education and the desire to offer an unparalleled, comprehensive program under one roof to best service families in the community.
- This large program had a need for a Special Education component along with an Early Childhood component in one central location.
- The District recognizes that Early Childhood education has a direct flow into the K-12 program.



- **Project planning started April of 2018.**
- **TMP Architecture, McCarthy & Smith, Inc., along with Plante Moran CRESA began coordination meetings with Farmington Public Schools to plan, design, and construct the remodel and new addition of the 45,000 square feet facility.**
- **Conceptual, schematic, and developed drawings underwent detailed design and cost analysis to create the most economical and efficient design to meet program needs.**





Bid & Award

- The project was released for bid on February 8, 2019.
- FECC bid on February 26, 2019 with 80 bids publicly opened and tabulated.
- Selected, qualified bidders underwent thorough Post Bid Interviews with the Project Team to ensure each bid was complete and accurate.
- Contracts were awarded in March, 2019.





Initial Construction

- Construction began in April 2019.
- Initial work in the spring of 2019 consisted of infrastructure upgrades above existing ceilings.
- The new addition began construction in late Spring 2019. Mass site demolition, grading, utilities, and building pad preparations took place in the summer of 2019.
- The new addition foundations and exterior envelope were constructed in the Fall of 2019 in order for finishes to begin during the Winter.



New Addition Construction

- The new addition continued construction through the winter of 2019/2020 until the State of Michigan closed non-essential activities in March, 2020 due to the pandemic. Planning continued, however, physical construction was halted.
- When work resumed in mid-May, 2020, the project had essentially been placed 8 weeks behind schedule.
- The Project Team initiated plans to press forward and committed to open the building as originally timed.





Critical Construction Timeline

- Over the next 12 weeks, the Project Team critically examined every function and scheduled to push ahead. This consisted of the following tasks:
 - Completion of exterior utilities, parking lots, landscaping, and new playground.
 - Completion of new addition exterior envelope and architectural finishes.
 - Remodeling of the existing building including major mechanical, electrical, and architectural finishes.



Final Results

- The FECC was successfully completed within the timeline originally targeted for Fall 2020.
- Students returned October, 2020.
- Restrictions due to COVID-19 parameters limited student return, but in the time that students occupied the new space during the Fall of 2020, positive feedback was received.





Farmington Early Childhood Center has a bright future ahead!

For more information, please visit the Farmington Early Childhood homepage:

<https://www.farmington.k12.mi.us/fcs>



Special Thanks

A special note of gratitude for the following entities and individuals:

Residents of the City of Farmington and Farmington Hills

Farmington Public Schools Board of Education

Dr. Robert Herrera, Superintendent of Schools

Ms. Felicia Venable, Director of Facilities

Ms. Kirsten Cicchella, Principal, FECC

McCarthy & Smith, Inc. (Construction Manager)

TMP Architecture, (Architect)

Peter Basso Associates (M&E Engineering)

Spalding DeDecker (Civil Design)

Foresite Engineering (Playground Design)

Plante Moran CRESA, Owner's Representative

Dr. George Heitsch

Mr. Jon Riebe



Special Thanks

- Cortis Brothers Trucking & Excavating
- Asphalt Specialists, Inc.
- Great Lakes Construction Services
- Moretti Foundation Co.
- Midtown Group
- J & J Construction Co.
- Zak Welding & Custom Work
- Wally Kosorski & Co.
- Superior Services
- DC Byers
- Hewett Company
- City Contracting
- DTS Contracting
- Northwest Acoustical
- Continental Contracting
- DMP Sign Co.
- R.E. Leggette
- Curtain Call
- Stafford Smith
- Professional Thermal Systems
- Quality Aire Systems
- Great Lakes Power & Lighting
- Precision Care
- Kimberly Fence
- Sinclair Recreation